

Articolo / Article

COD.

Lavabo Hide 100x45 MONOFORO. Installazione sospesa.
Hide 100x45 washbasin SINGLE TAP HOLE . Wall hung installation

Bianco Europa / Europa White

31250101S

Colorato MONOFORO/ SINGLE TAP HOLE Coloured

Specificare il colore al momento dell'ordine

Specify the color when ordering

312501..S

Lavabo Hide 100x45 SENZA FORO. Installazione sospesa.

Hide 100x45 washbasin NO TAP HOLE . Wall hung installation

Bianco Europa / Europa White

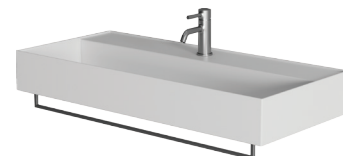
31250101SN

Colorato SENZA FORO/ NO TAP HOLE Coloured

Specificare il colore al momento dell'ordine

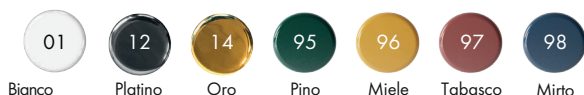
Specify the color when ordering

312501..SN



Lucidi / Shiny

Opachi / Matt



cm 100x45xh13,5

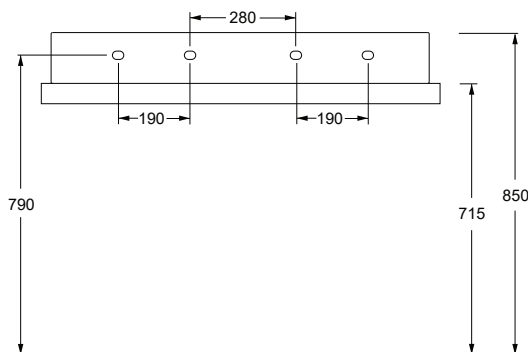
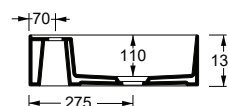
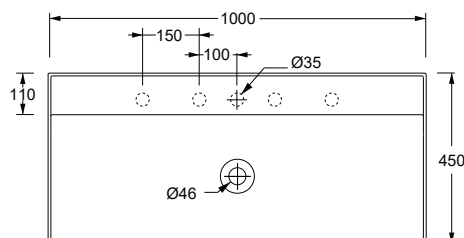
kg 25,5

Capienza bacino/Basin capacity

lt

pallet ita 16

pallet ex 32



TECNICAL SHEET n°: 57	DESIGNER: MASSIMILIANO BRACONI	CODE: 31250101S	Alice Ceramica srl Via Sassacci, 17 - 01033 Civita Castellana (VT), Italy Tel [+39] 0761.598.328 [+39] 0761.513.252 Fax [+39]0761.540.352 www.aliceceramica.com - info@aliceceramica.it		
SHEET FORMAT: A4	ISO	REVISION: 00	SCALE: 1:20	DATE: 22/12/2022	
REGULATION: EN 14688 / EN 31 / Dop- 14688*	Pg: 1/2				
All the measurements respect the tollerances provided by the Alice Ceramica srl.					

* Regulations here shown are exclusively referred to ceramic items

Accessori / Accesories

COD.

PILO06

PILO08

FIX01



Piletta in ceramica scarico libero
Ceramic free flow drain



Piletta Up&Down
Up&Down drain



Fissaggio per lavabo sospeso
Fixing screw for wall hung Washbasin



Sifone tondo in ottone finitura cromo
Round brass siphon chrome finish



Sifone tondo in ottone finitura nero matt
Round brass siphon black matt finish



Porta salvietta finitura cromo
Towel holder chrome finish



Porta salvietta finitura nero matt
Towel holder black matt finish

COD.

SIF01

SIF01N

PA100H

PA100HN

TECNICAL SHEET n°: 57	DESIGNER: MASSIMILIANO BRACONI			CODE: 31250101S	
SHEET FORMAT: A4	ISO	REVISION: 00	SCALE: 1:20	DATE: 22/12/2022	
REGULATION:	EN 14688 / EN 31 / Dop- 14688*			Pg: 2/2	
All the measurements respect the tollerances provided by the Alice Ceramica srl.					

Alice Ceramica srl
Via Sassacci, 17 - 01033
Civita Castellana (VT), Italy
Tel [+39] 0761.598.328 [+39] 0761.513.252
Fax [+39] 0761.540.352
www.aliceceramica.com - info@aliceceramica.it

