

Articolo / Article

COD.

Lavabo 50x35 MONOFORO. Installazione sospesa.
Hide 50x35 washbasin SINGLE TAP HOLE .Wall hung installation

Bianco Europa / Europa White 31270101S

Colorato MONOFORO/ SINGLE TAP HOLE Coloured
Specificare il colore al momento dell'ordine
Specify the color when ordering 312701..S

Lavabo Hide 50x35 SENZA FORO. Installazione sospesa.
Hide 50x35 washbasin NO TAP HOLE . Wall hung installation

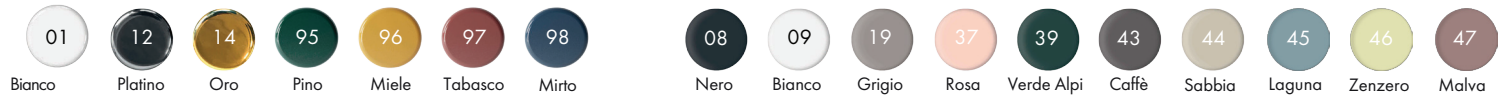
Bianco Europa / Europa White 31270101SN

Colorato SENZA FORO/ NO TAP HOLE Coloured
Specificare il colore al momento dell'ordine
Specify the color when ordering 312701..SN

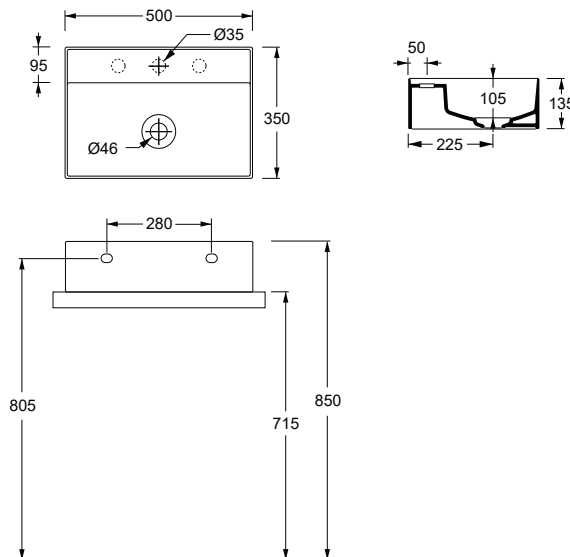


Lucidi / Shiny

Opachi / Matt



cm 50x35xh13,5 | Kg 12,5 | Capienza bacino/Basin capacity lt | pallet ita 18 | pallet ex 36



TECNICAL SHEET n°: 55	DESIGNER: MASSIMILIANO BRACONI	CODE: 31270101S	Alice Ceramica srl Via Sassacci, 17 - 01033 Civita Castellana (VT), Italy Tel [+39] 0761.598.328 [+39] 0761.513.252 Fax [+39] 0761.540.352 www.aliceceramica.com - info@aliceceramica.it				
SHEET FORMAT: A4	ISO	REVISION: 00				SCALE: 1:20	DATE: 22/12/2022
REGULATION: EN 14688 / EN 31 / Dop- 14688*		Pg: 1/2					
All the measurements respect the tollerances provided by the Alice Ceramica srl.							



* Regulations here shown are exclusively referred to ceramic items

Accessori / Accesories

COD.



Piletta in ceramica scarico libero
Ceramic free flow drain

PILO06



Piletta Up&Down
Up&Down drain

PILO08



Fissaggio per lavabo sospeso
Fixing screw for wall hung Washbasin

FIX01



Sifone tondo in ottone finitura cromo
Round brass siphon chrome finish

COD.

SIF01



Sifone tondo in ottone finitura nero matt
Round brass siphon black matt finish

SIF01N



Porta salvietta finitura cromo
Towel holder chrome finish

PA50H



Porta salvietta finitura nero matt
Towel holder black matt finish

PA50HN

TECNICAL SHEET n°: 55	DESIGNER: MASSIMILIANO BRACONI			CODE: 31270101S	
SHEET FORMAT: A4	ISO	REVISION: 00	SCALE: 1:20	DATE: 22/12/2022	
REGULATION:	EN 14688 / EN 31 / Dop- 14688*			Pg: 2/2	
All the measurements respect the tollerances provided by the Alice Ceramica srl.					

Alice Ceramica srl
Via Sassacci, 17 - 01033
Civita Castellana (VT), Italy
Tel [+39] 0761.598.328 [+39] 0761.513.252
Fax [+39] 0761.540.352
www.aliceceramica.com - info@aliceceramica.it

