

Articolo / Article

COD.

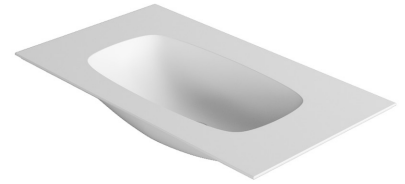
Lavabo Nur 82x46 MONOFORO. Installazione ad appoggio o sospesa
 Nur 82x46 washbasin SINGLE TAP HOLE .Countertop or wall hung installation

Bianco Europa / Europa White 33195101

Colorato MONOFORO/ SINGLE TAP HOLE Coloured

Specificare il colore al momento dell'ordine

Specify the color when ordering 331951..



Lavabo Nur 82x46 SENZA FORO. Installazione ad appoggio o sospesa
 Nur 82x46 washbasin NO TAP HOLE . Countertop or wall hung installation

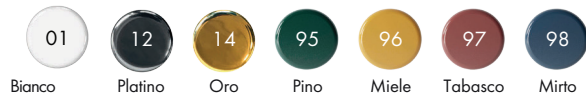
Bianco Europa / Europa White 33195101N

Colorato SENZA FORO/ NO TAP HOLE Coloured

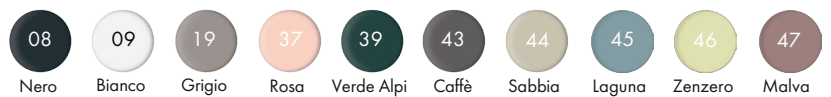
Specificare il colore al momento dell'ordine

Specify the color when ordering 331951..N

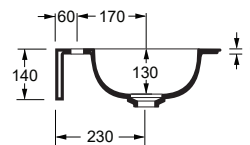
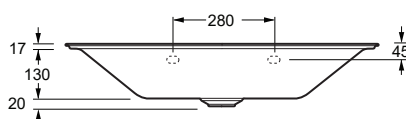
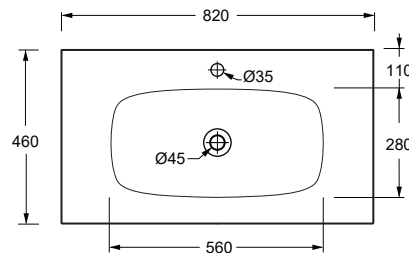
Lucidi / Shiny



Opachi / Matt



cm 82x46x14	kg	Capienza bacino/Basin capacity	lt	pallet ita	pallet ex
-------------	----	--------------------------------	----	------------	-----------



TECNICAL SHEET n°: 37	DESIGNER: MASSIMILIANO BRACONI	CODE: 33195101	Alice Ceramica srl Via Sassacci, 17 - 01033 Civita Castellana (VT), Italy Tel [+39] 0761.598.328 [+39] 0761.513.252 Fax [+39] 0761.540.352 www.aliceceramica.com - info@aliceceramica.it				
SHEET FORMAT: A4	ISO	REVISION: 00				SCALE: 1:20	DATE: 19/12/2022
REGULATION: CE EN 14688 / EN31 / Dop-14688*		Pg: 1/2					
All the measurements respect the tollerances provided by the Alice Ceramica srl.							



* Regulations here shown are exclusively referred to ceramic items

Accessori / Accessories



Piletta in ceramica scarico libero
Ceramic free flow drain

COD.

PIL006



Sifone tondo in ottone finitura cromo
Round brass siphon chrome finish

COD.

SIF01



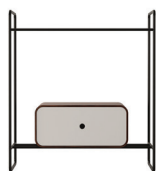
Sifone tondo in ottone finitura nero matt
Round brass siphon black matt finish

SIF01N



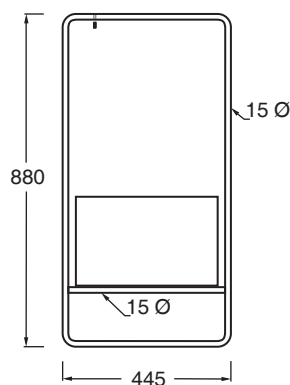
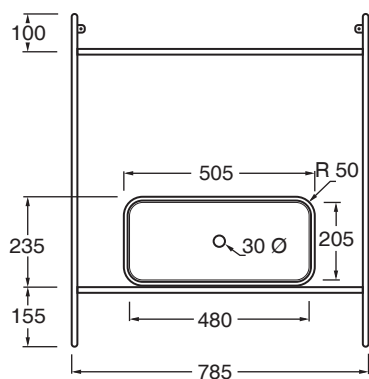
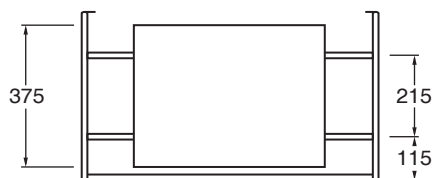
Fissaggio per lavabo sospeso
Fixing screw for wall hung Washbasin

FIX01



Struttura Nur con cassetto personalizzabile con tutti i nostri colori
Nur framework with wooden drawer and customizable front with our colours

MSTNN0801



TECHNICAL SHEET n°: 37	DESIGNER: MASSIMILIANO BRACONI	CODE: 33195101		
SHEET FORMAT: A4	ISO	REVISION: 00	SCALE: 1:20	DATE: 19/12/2022
REGULATION: EN 14688 / EN31 / Dop-14688*				Pg: 2/2
All the measurements respect the tollerances provided by the Alice Ceramica srl.				

Alice Ceramica srl
Via Sassacci, 17 - 01033
Civita Castellana (VT), Italy
Tel [+39] 0761.598.328 [+39] 0761.513.252
Fax [+39] 0761.540.352
www.aliceceramica.com - info@aliceceramica.it

